



SNOWSOUND FIBER 7 VELO

AKOESTIEKBOETIEK



La tecnologia brevettata Snowsound-Fiber è basata su morbide fibre acustiche di poliestere interconnesse, intrinsecamente ignifughe. L'interazione fra le speciali fibre acustiche e l'aria permette di ridurre il fastidioso riverbero acustico degli ambienti, migliorando la qualità della vita e del lavoro.

The patented Snowsound-Fiber technology is based on soft interwoven polyester acoustic fibers that are inherently fire-resistant. The interaction between the special acoustic fibers and air reduces the annoying acoustic riverberation in rooms while improving quality of life and work.

Composizione: fibre acustiche 100% poliestere

Composition: acoustic fibers 100% polyester

Peso: 111 (g/m²) - 366 (g/metro lineare)

Weight: 111 (g/m²) - 366 (g/linear meter)

Altezza rotolo (cm): 330 (tolleranza 0 + 3 cm)

Roll height (cm): 330 (tolerance 0 + 3 cm)

REAZIONE AL FUOCO

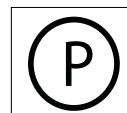
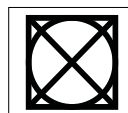
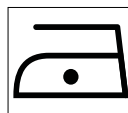
REACTION TO FIRE

Euroclasse: B-s1, d0. Classificazione di reazione al fuoco secondo UNI EN 13501-1 eseguita in conformità alla UNI EN ISO 11925-2 e UNI EN 13823

Euroclass: B-s1, d0. Reaction to fire classification according to UNI EN 13501-1, executed following UNI EN ISO 11925-2 and UNI EN 13823

MANUTENZIONE E LAVAGGIO

MAINTENANCE AND WASHING



100% RICICLABILE

100% RECYCLABLE

CERTIFICATO GREENGUARD GOLD

CERTIFIED GREENGUARD GOLD



Confort termico e visivo di tende secondo la norma UNI EN 14501:2021

Thermal and visual comfort of blinds according to standard UNI EN 14501:2021

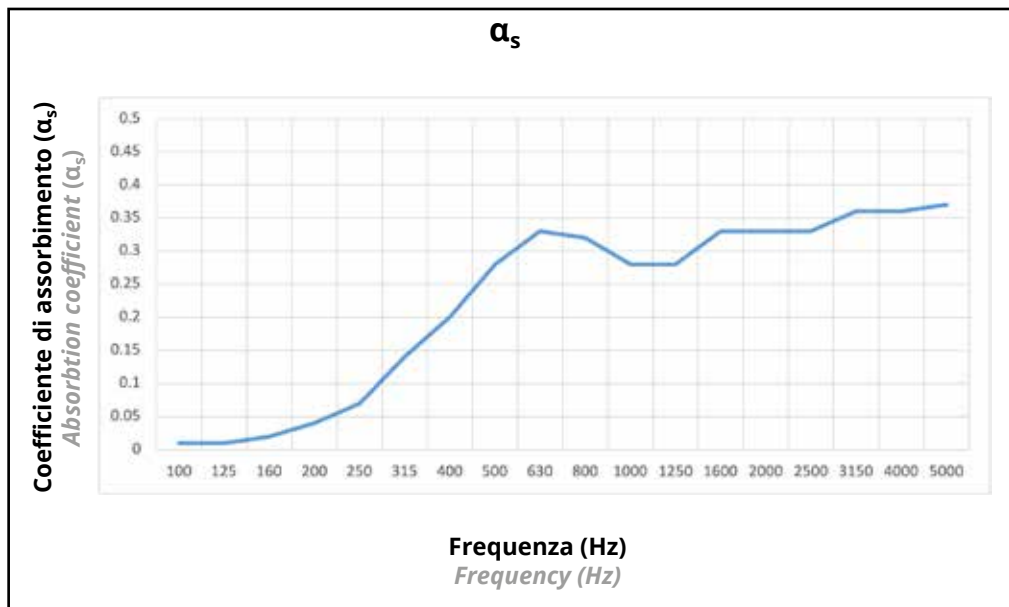
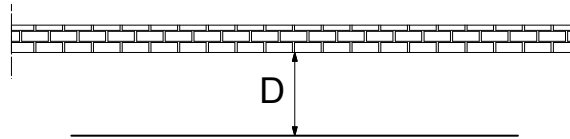
CONFORT VISIVO - VISUAL COMFORT							
Codice Code	Fattore di trasmissione solare diretta <i>Solar transmittance</i>	Fattore di trasmissione luminosa <i>Light transmittance</i>	Fattore di trasmissione UV <i>UV transmittance</i>	Fattore di riflessione solare <i>Solar reflectance</i>	Fattore di riflessione luminosa <i>Light reflectance</i>	Fattore di assorbimento solare <i>Solar absorption</i>	Fattore di assorbimento luminoso <i>Light absorption</i>
7F7-700	55%	55%	39%	42%	43%	3%	2%
7F7-701	58%	58%	41%	40%	41%	2%	1%

CONFORT VISIVO - VISUAL COMFORT					
Codice Code	Controllo del bagliore <i>Glare control</i>	Privacy notturna <i>Night privacy</i>	Contatto visivo con l'esterno <i>Visual contact with the outside</i>	Utilizzazione luce diurna <i>Daylight utilisation</i>	Fattore di trasmissione luminosa (apertura) <i>Light transmittance (openness factor)</i>
7F7-700	0	0	2	4	16%
7F7-701	0	0	2	4	18%

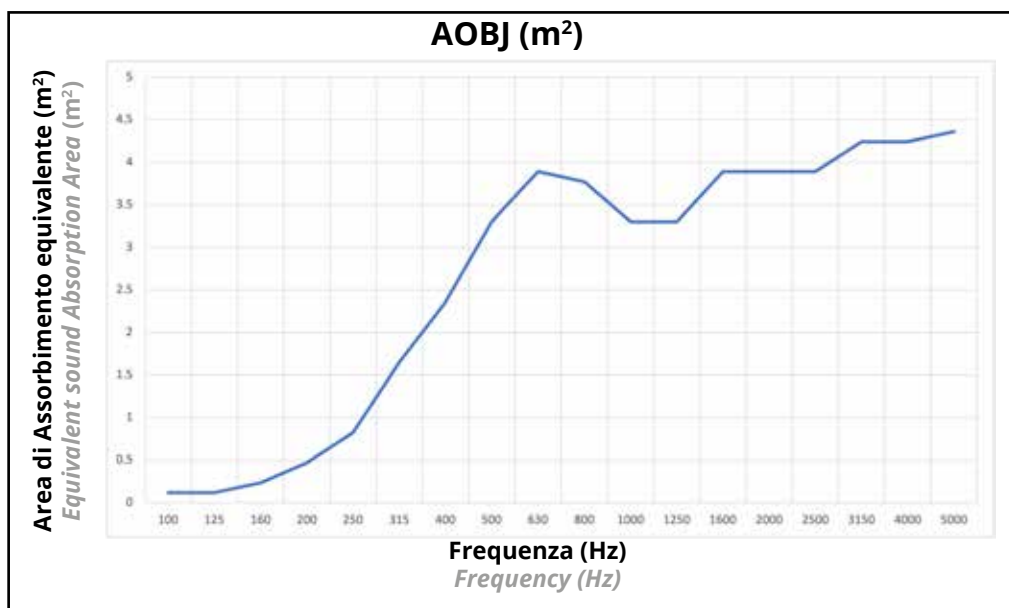
CONFORT TERMICO - THERMAL COMFORT									
Codice Code	Fattore solare totale g_{tot} <i>Solar factor g_{tot}</i>		Fattore di trasferimento secondario del calore $q_{i,tot}$ <i>Secondary heat transfer factor $q_{i,tot}$</i>		Fattore di trasferimento solare diretto $\tau_{e,tot}$ <i>Solar transmittance $\tau_{e,tot}$</i>		Fattore di schermatura solare F_c <i>Shading coefficient F_c</i>		
	Interno al vetro Vetrata D (32%) <i>Internal to the glazing Glazing D (32%)</i>	Integrato nel vetro Vetrata C (59%) <i>Integrated to the glazing Glazing C (59%)</i>	Interno al vetro Vetrata D (32%) <i>Internal to the glazing Glazing D (32%)</i>	Integrato nel vetro Vetrata C (59%) <i>Integrated to the glazing Glazing C (59%)</i>	Interno al vetro Vetrata D (32%) <i>Internal to the glazing Glazing D (32%)</i>	Integrato nel vetro Vetrata C (59%) <i>Integrated to the glazing Glazing C (59%)</i>	Interno al vetro Vetrata D (32%) <i>Internal to the glazing Glazing D (32%)</i>	Integrato nel vetro Vetrata C (59%) <i>Integrated to the glazing Glazing C (59%)</i>	Interno al vetro Vetrata D (32%) <i>Internal to the glazing Glazing D (32%)</i>
7F7-700	28% classe/class 2	36% classe/class 1	10% classe/class 2	4% classe/class 3	18%	32%	87%	61%	
7F7-701	28% classe/class 2	37% classe/class 1	9% classe/class 3	4% classe/class 3	19%	33%	87%	63%	

Tessuto: PLANARE
Fabric: PLANAR

Installazione: Distanza da parete 10cm (D=10cm)
Installation: Distance from the wall 10cm (D=10cm)



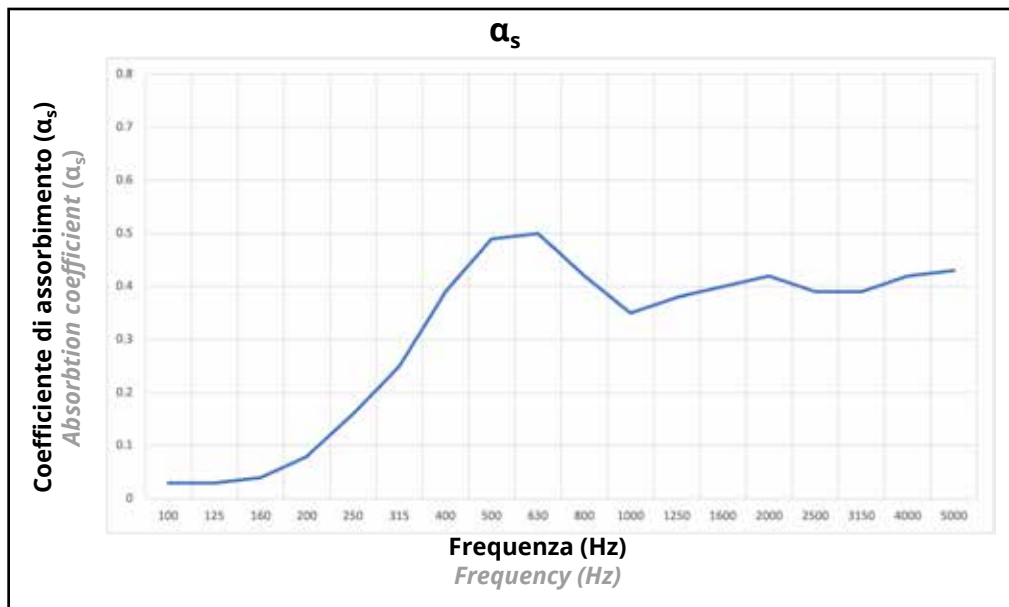
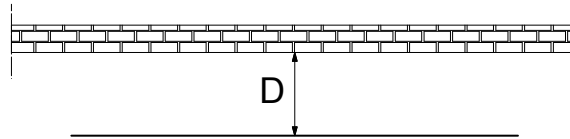
La prova è stata eseguita secondo le prescrizioni della norma UNI EN ISO 354
Test executed according to UNI EN ISO 354



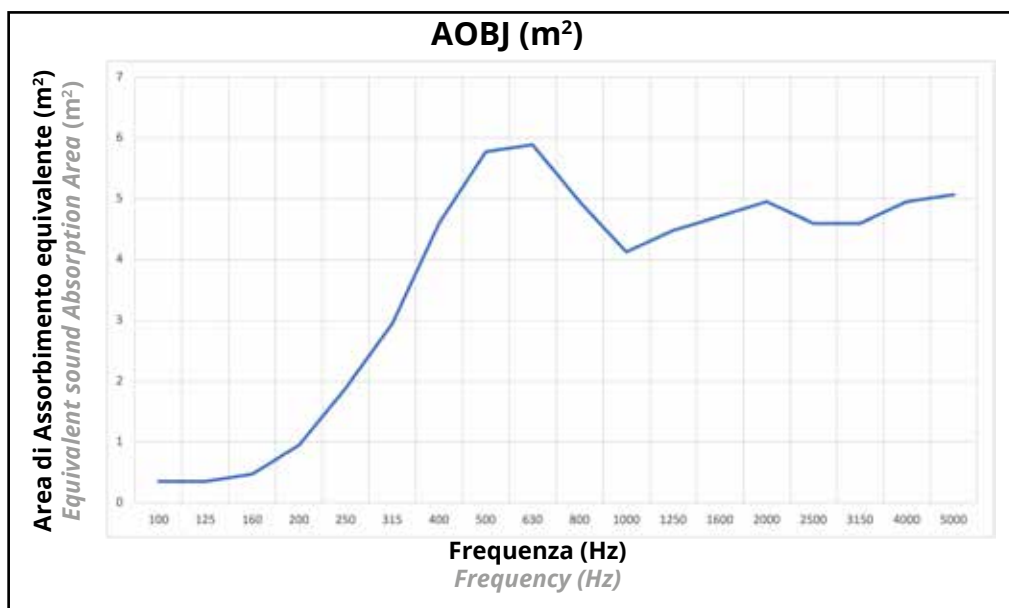
La prova è stata eseguita secondo le prescrizioni della norma UNI EN ISO 354
Test executed according to UNI EN ISO 354

Tessuto: PLANARE
Fabric: PLANAR

Installazione: Distanza da parete 20cm (D=20cm)
Installation: Distance from the wall 20cm (D=20cm)



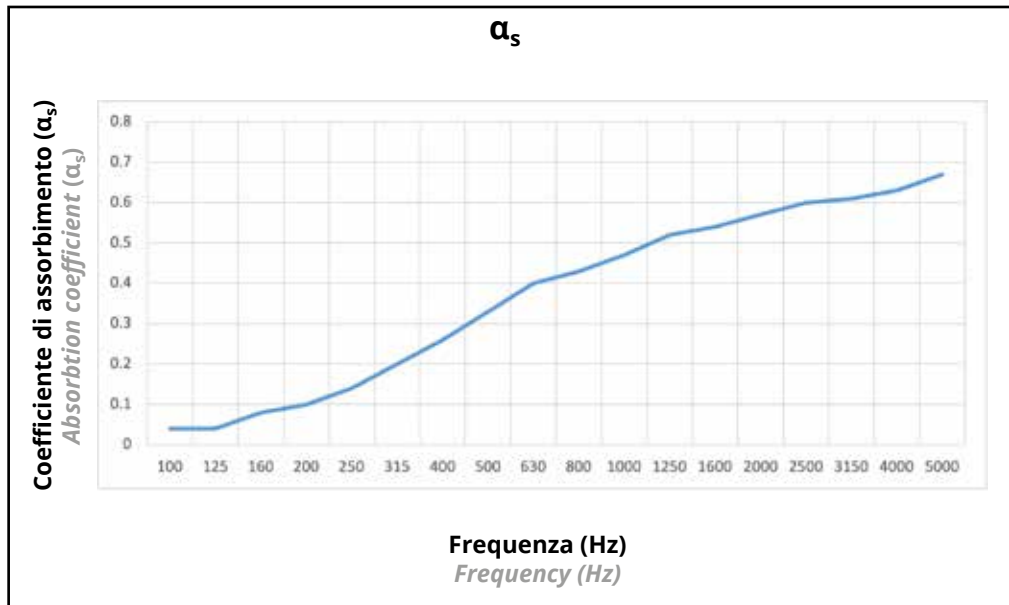
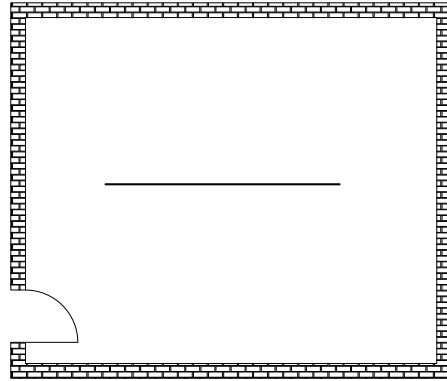
La prova è stata eseguita secondo le prescrizioni della norma UNI EN ISO 354
Test executed according to UNI EN ISO 354



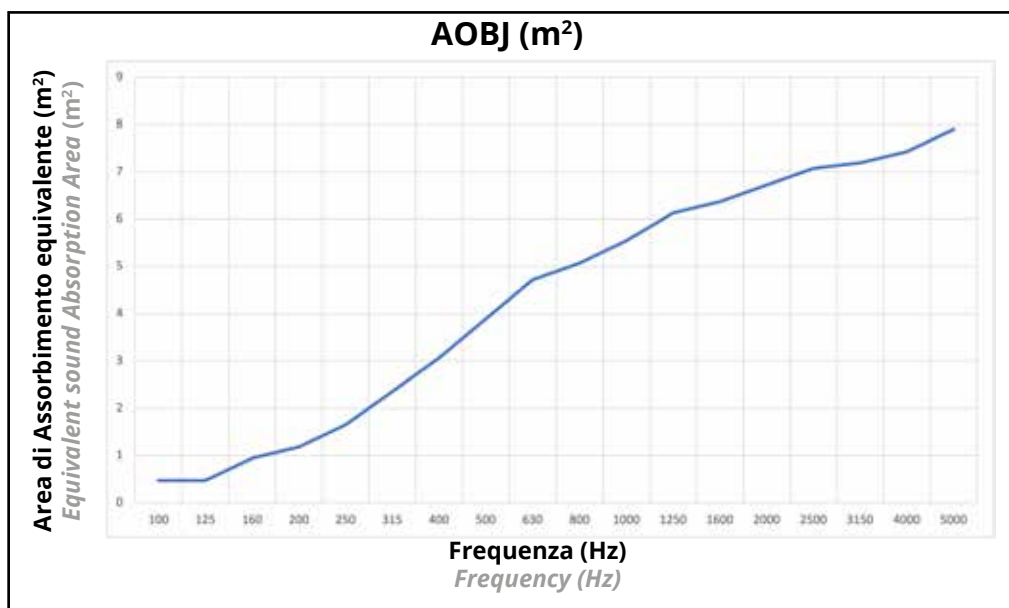
La prova è stata eseguita secondo le prescrizioni della norma UNI EN ISO 354
Test executed according to UNI EN ISO 354

Tessuto: PLANARE
Fabric: PLANAR

Installazione: CENTRO STANZA
Installation: CENTER OF THE ROOM



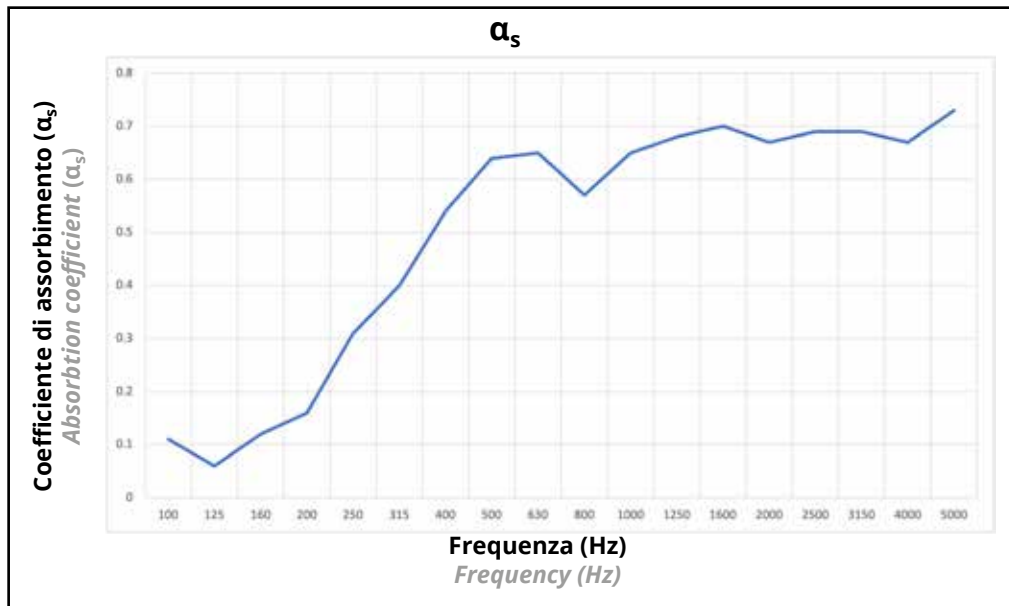
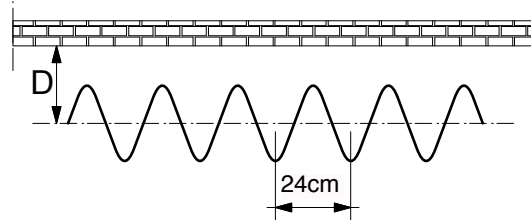
Procedura Sperimentale
Experimental Procedure



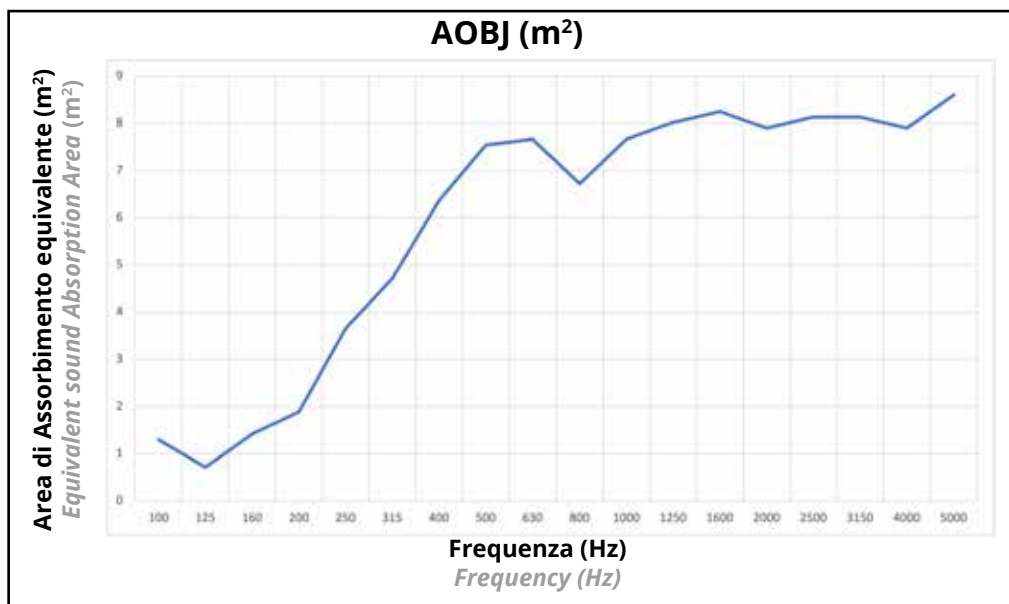
La prova è stata eseguita secondo le prescrizioni della norma UNI EN ISO 354
Test executed according to UNI EN ISO 354

Tessuto: ONDULATO a passo 24cm
Fabric: WAVY (24cm pace)

Installazione: Distanza dall'asse da parete 20cm (D=20cm)
Installation: Wall to axis distance 20cm (D=20cm)



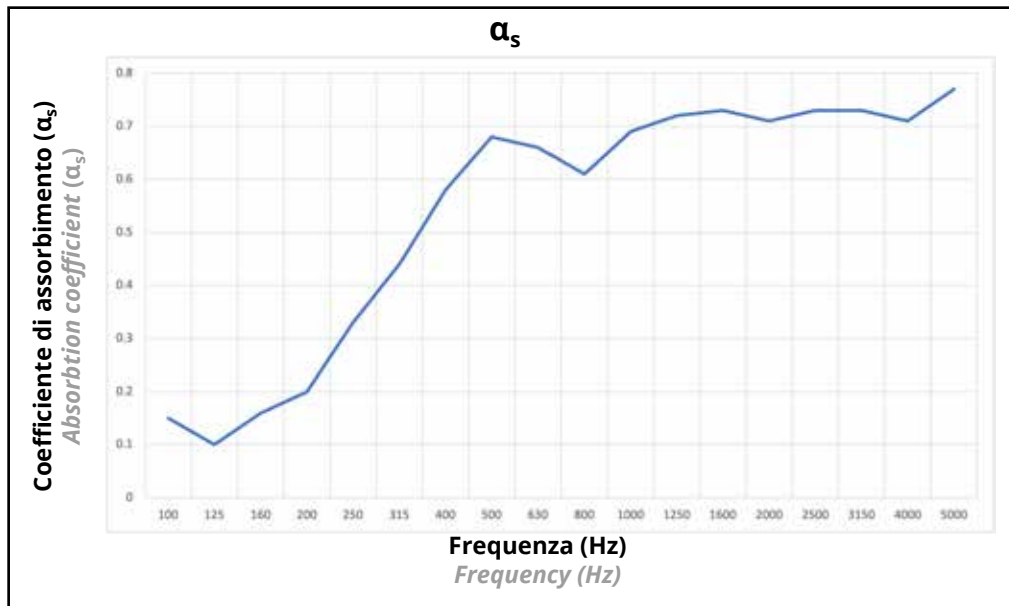
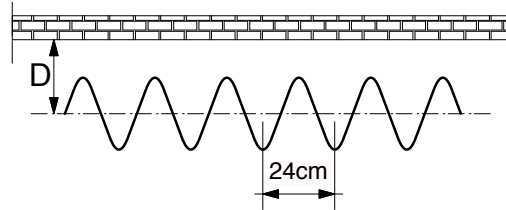
La prova è stata eseguita secondo le prescrizioni della norma UNI EN ISO 354
Test executed according to UNI EN ISO 354



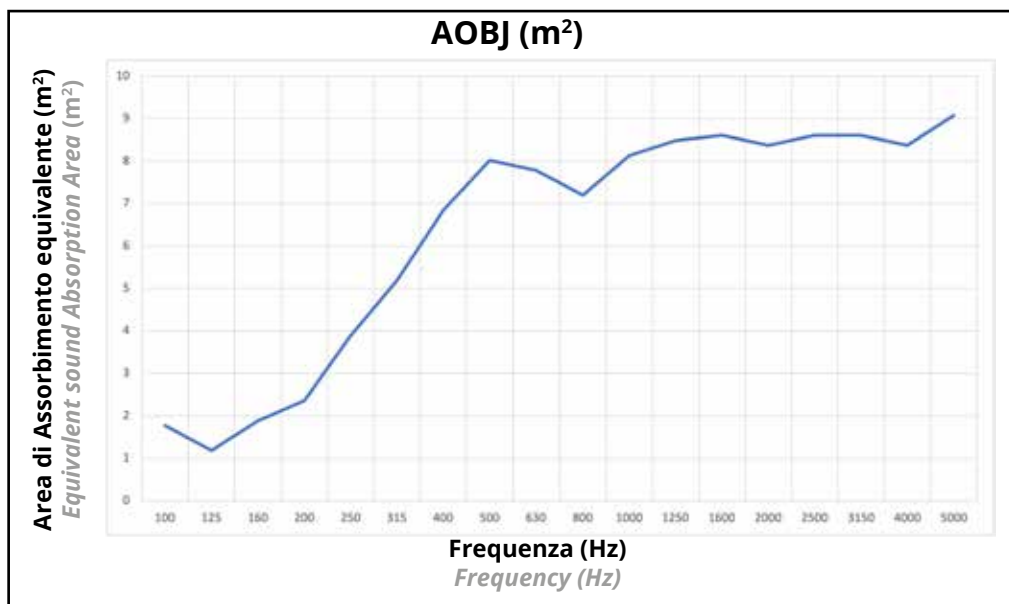
La prova è stata eseguita secondo le prescrizioni della norma UNI EN ISO 354
Test executed according to UNI EN ISO 354

Tessuto: ONDULATO a passo 24cm
Fabric: WAVY (24cm pace)

Installazione: Distanza dall'asse da parete 30cm (D=30cm)
Installation: Wall to axis distance 30cm (D=30cm)



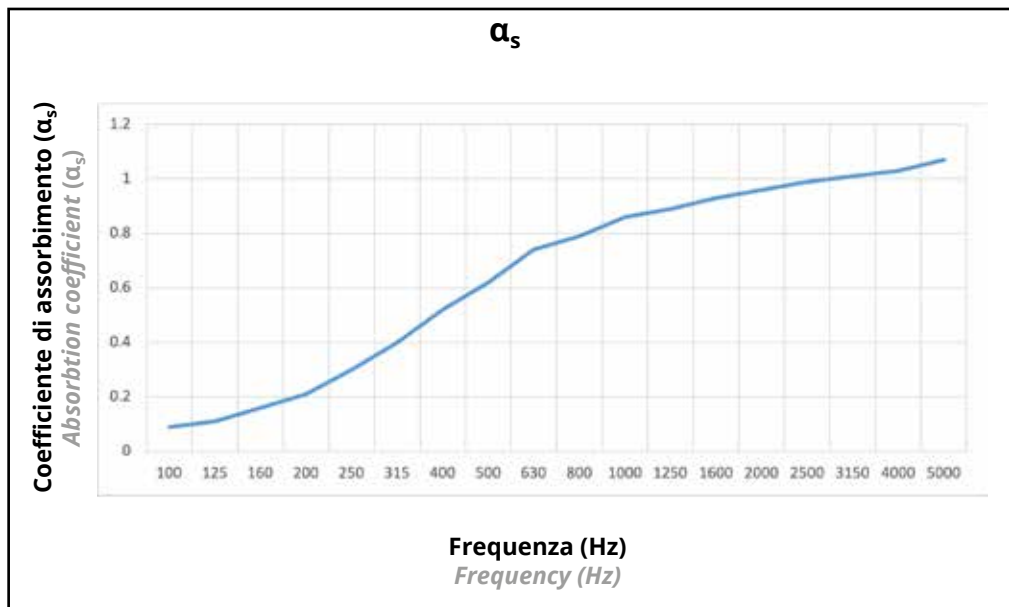
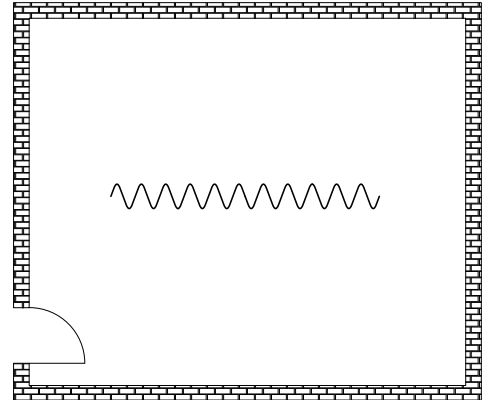
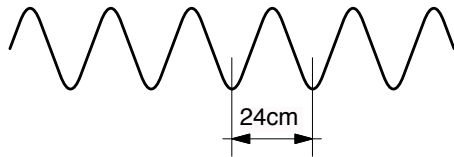
La prova è stata eseguita secondo le prescrizioni della norma UNI EN ISO 354
Test executed according to UNI EN ISO 354



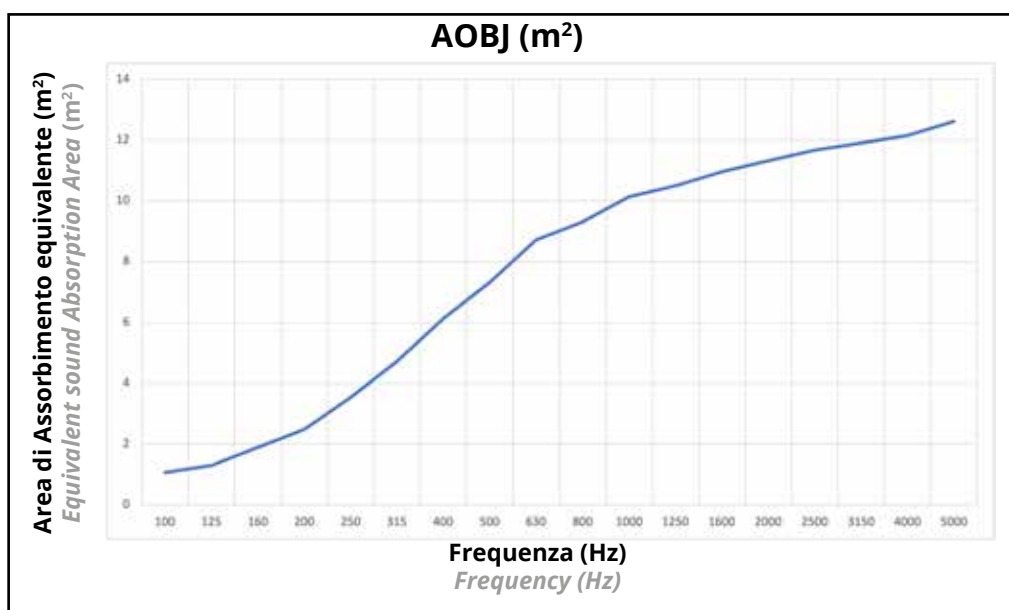
La prova è stata eseguita secondo le prescrizioni della norma UNI EN ISO 354
Test executed according to UNI EN ISO 354

Tessuto: ONDULATO a passo 24cm
Fabric: WAVY (24cm pace)

Installazione: CENTRO STANZA
Installation: CENTER OF THE ROOM



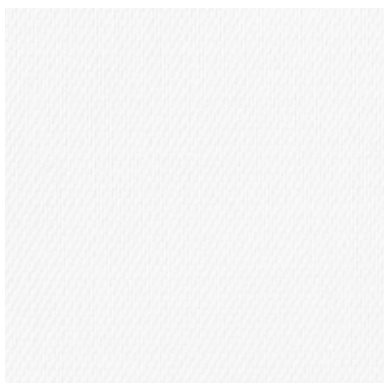
Procedura Sperimentale
Experimental Procedure



La prova è stata eseguita secondo le prescrizioni della norma UNI EN ISO 354
Test executed according to UNI EN ISO 354

FIBER 7 VELO

700



701



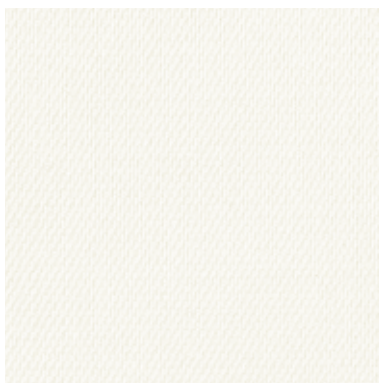
702



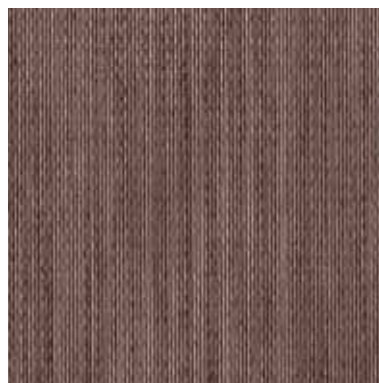
703



704



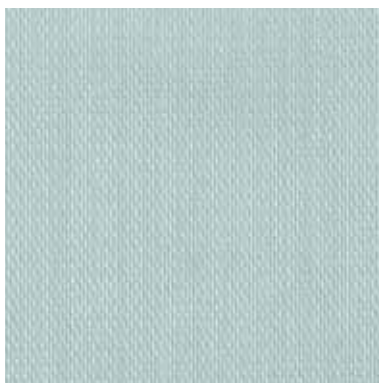
705



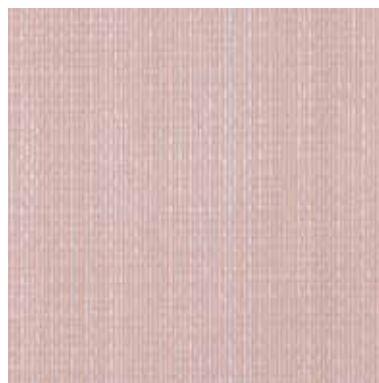
706



707



708





AKOESTIEKBOETIEK



Deze informatie is afkomstig van de website van AkoestiekBoetiek.nl.

Voor vragen, toelichting en meer informatie kunt u contact opnemen met:

AkoestiekBoetiek

Modem 20b

7741 MJ Coevorden

T +31 (0)85-077 3688

E info@akoestiekboetiek.nl

W www.akoestiekboetiek.nl